

Integrated Coastal Zone Management of cultures and fishery of mussels in Limfjorden, Denmark



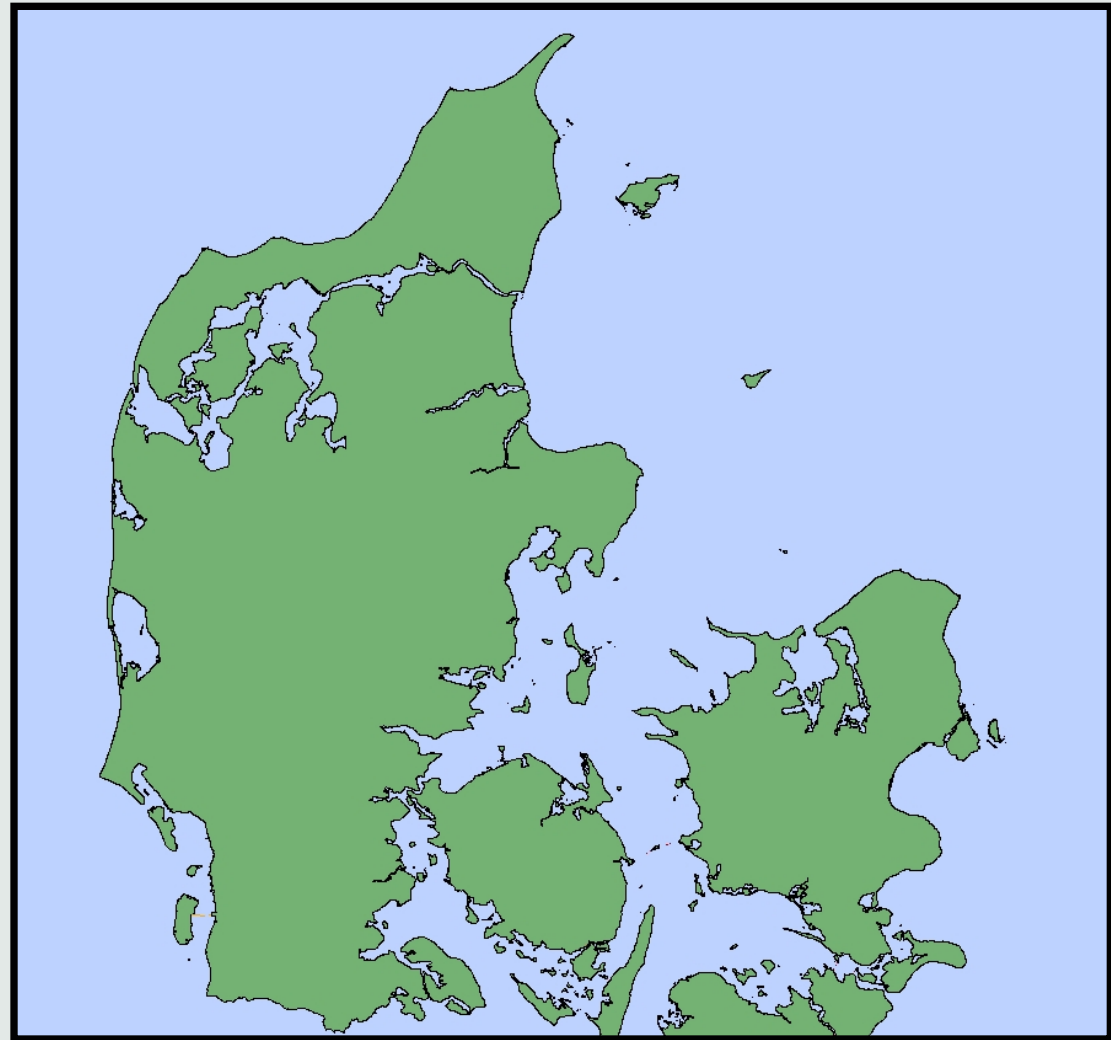
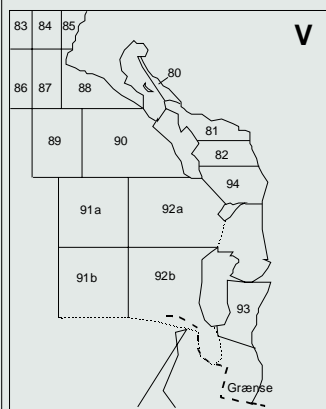
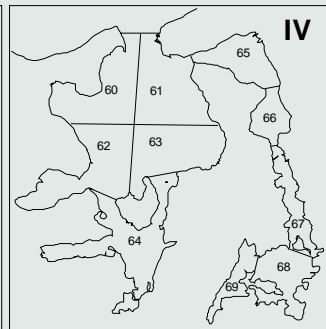
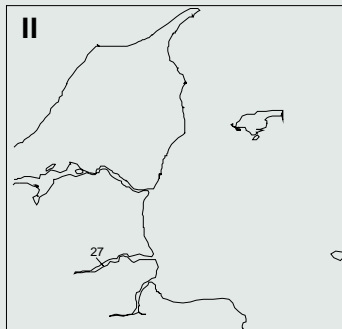
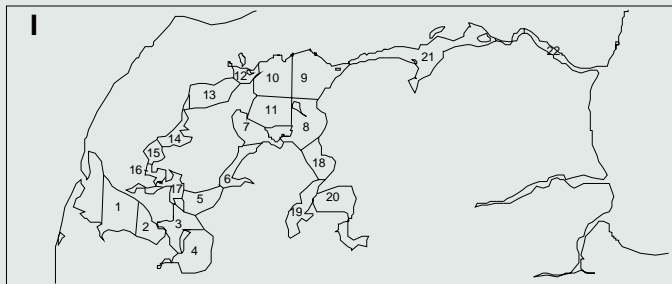
Kerstin Geitner, GIS coordinator (kjg@difres.dk),
Per Dolmer, senior scientist (pdo@difres.dk),
Danish Institute for Fisheries Research



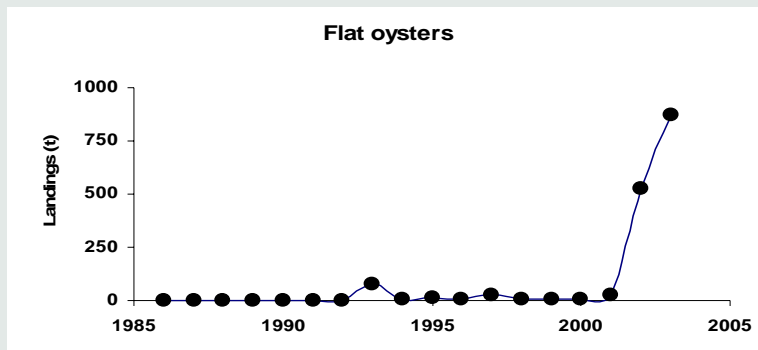
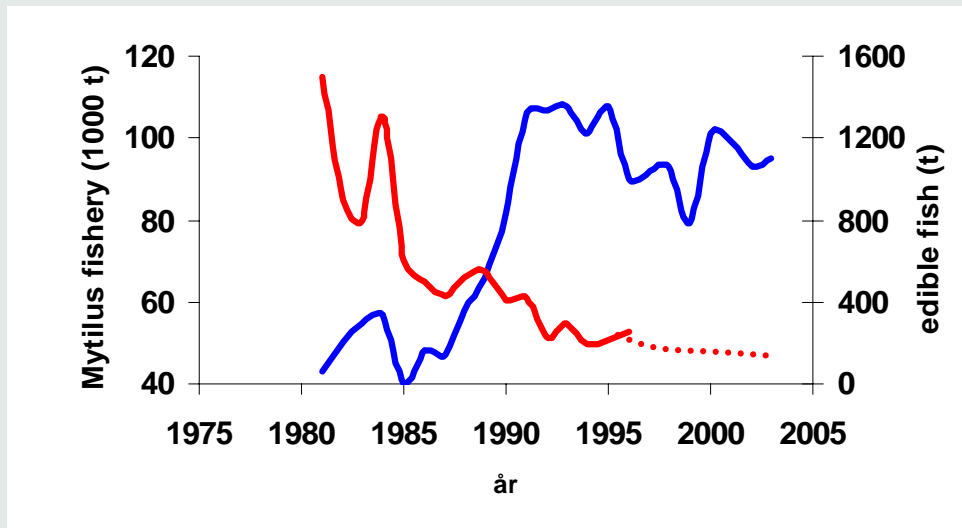
Agenda

- Blue mussel in Denmark
- Committee for shellfish production
- Classification of production areas
- Classification on the Internet
- Classification for aquaculture of rainbow trout

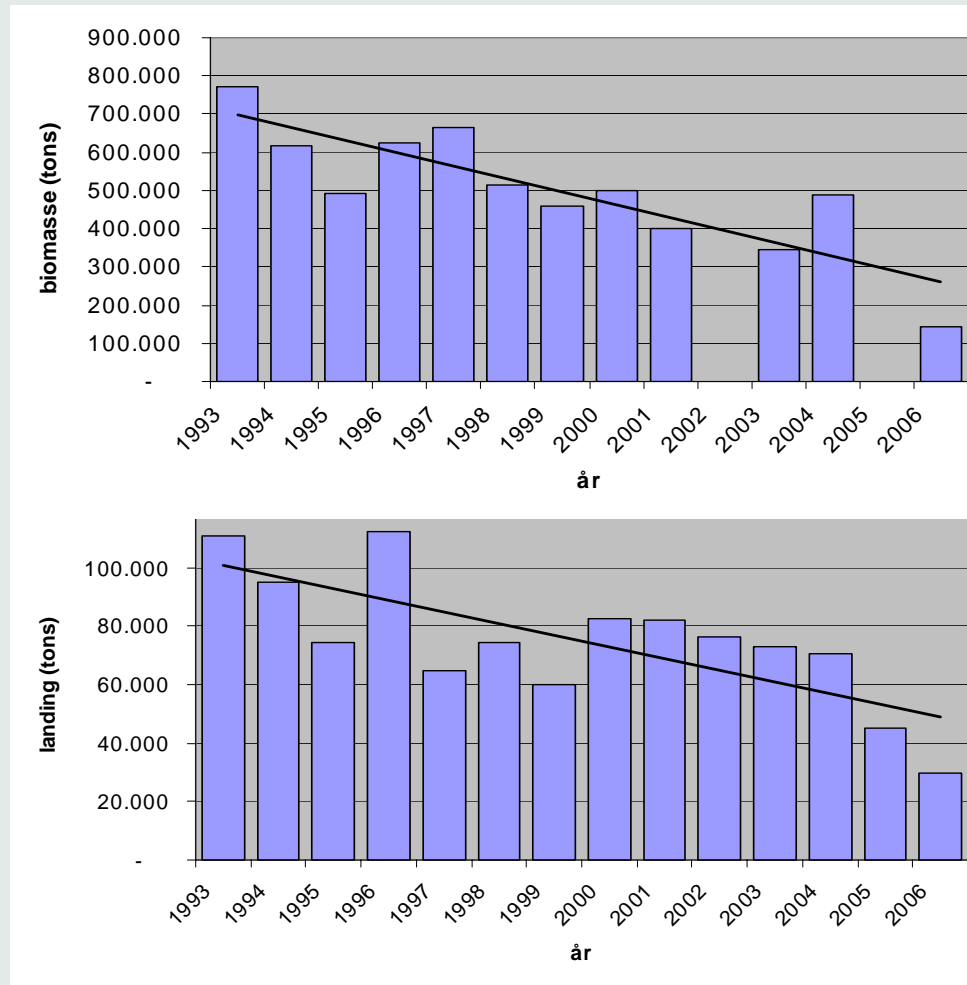
Shellfish areas in Denmark (Shellfish directive)



Landings of edible fish, blue mussels and oysters



Development in Mussel biomass and landings





Committee for shellfish production appointed by the Minister of Food, Agriculture and Fisheries

- Danish Environmental Protection Agency
- Local counties
- Danish Shellfish Center
- Royal Danish Administration of Navigation and Hydrology
- Ministry of Food, Agriculture and Fisheries
 - Danish Directorate for Fisheries
 - DIFRES

Classification of production areas

- **Areas not available to mussel production**
- **Areas available for some forms of mussel production**
- **Areas with fishing grounds**

Areas regulated by international nature protection directives: Habitat-Ramsar-Bird directive

Areas regulated by national nature protection directives

Areas closed to mussel dredging

Areas with eel grasses and macroalgae

Areas included in monitoring programme of macroalgae

Areas with stone reefs

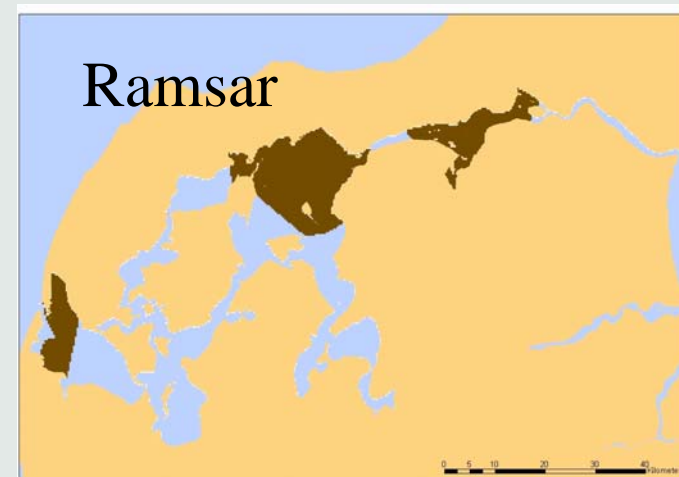
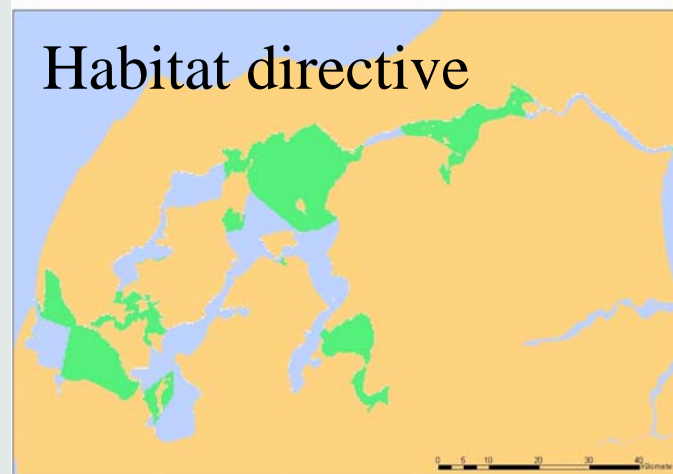
Areas close to summerhouses

Areas close to bathing beaches

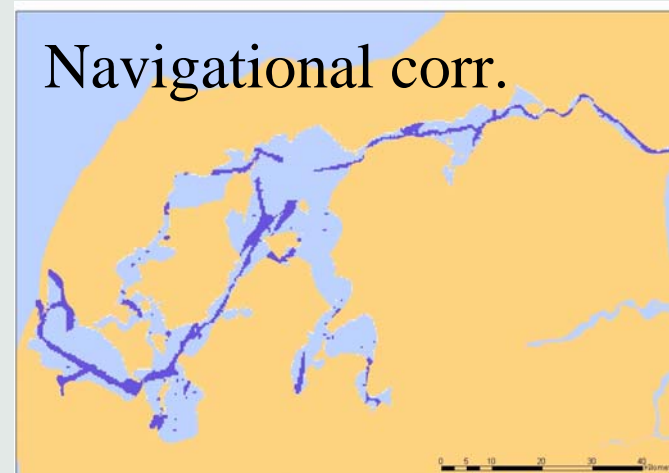
Navigational marks and corridors

Areas with extraction of sediments

Natura 2000 areas

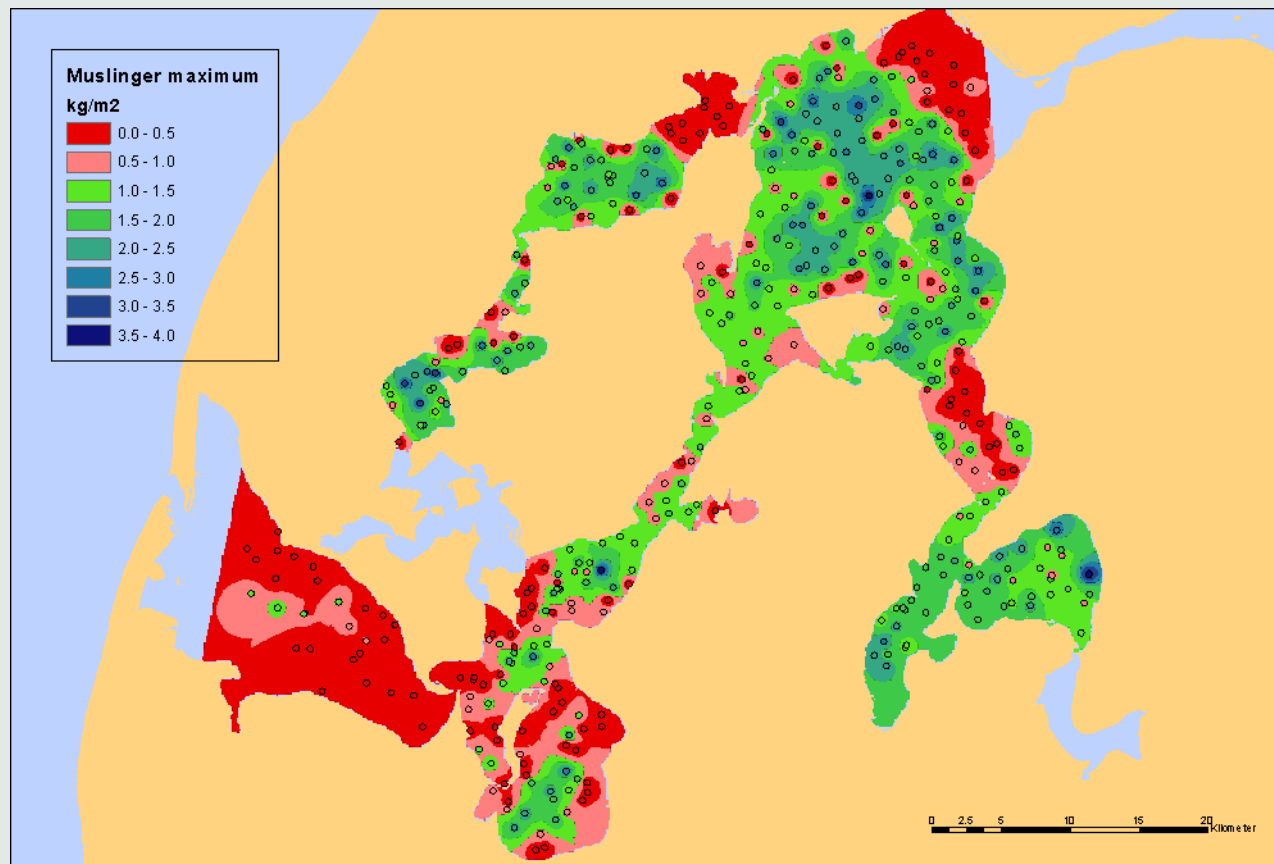


Other concerns



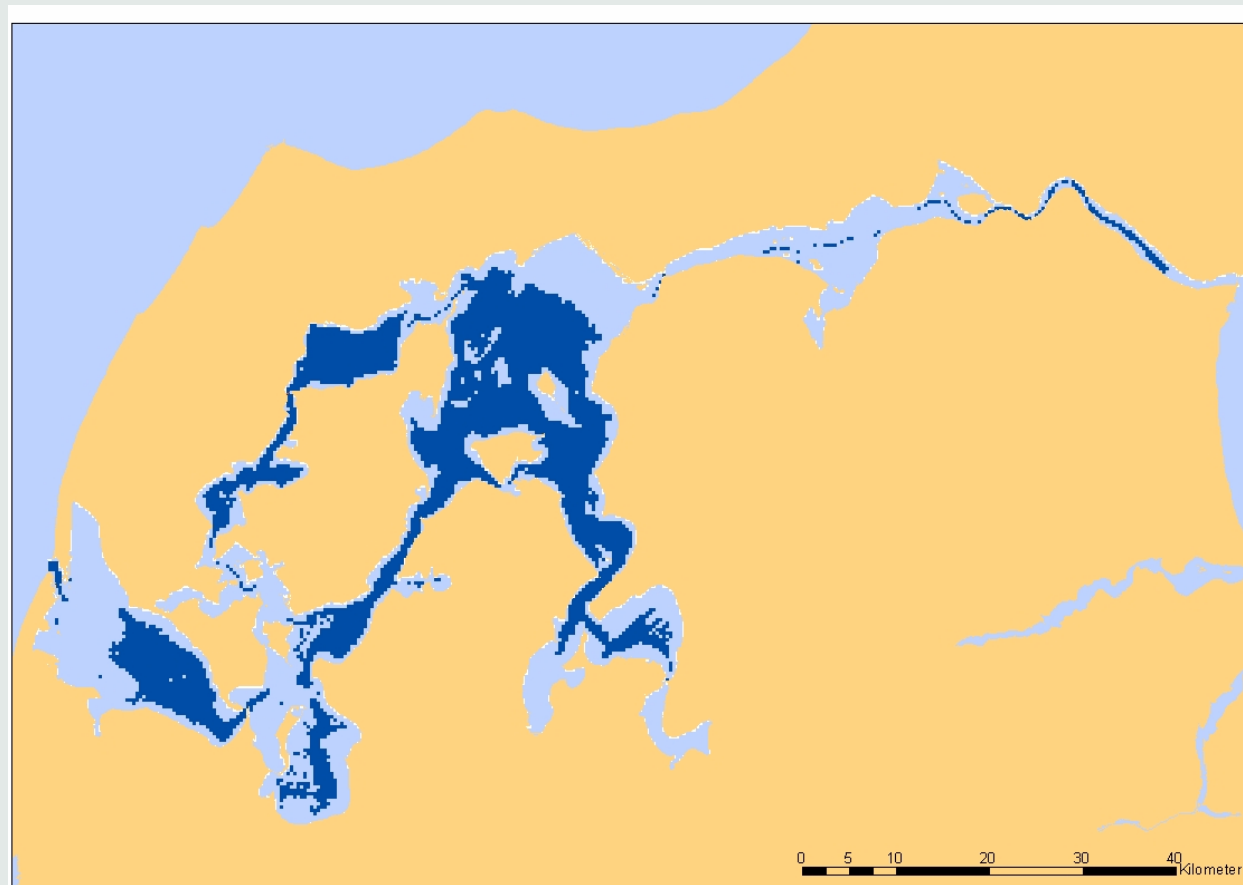
Blue mussel biomass

71-388 stations 1993-2003

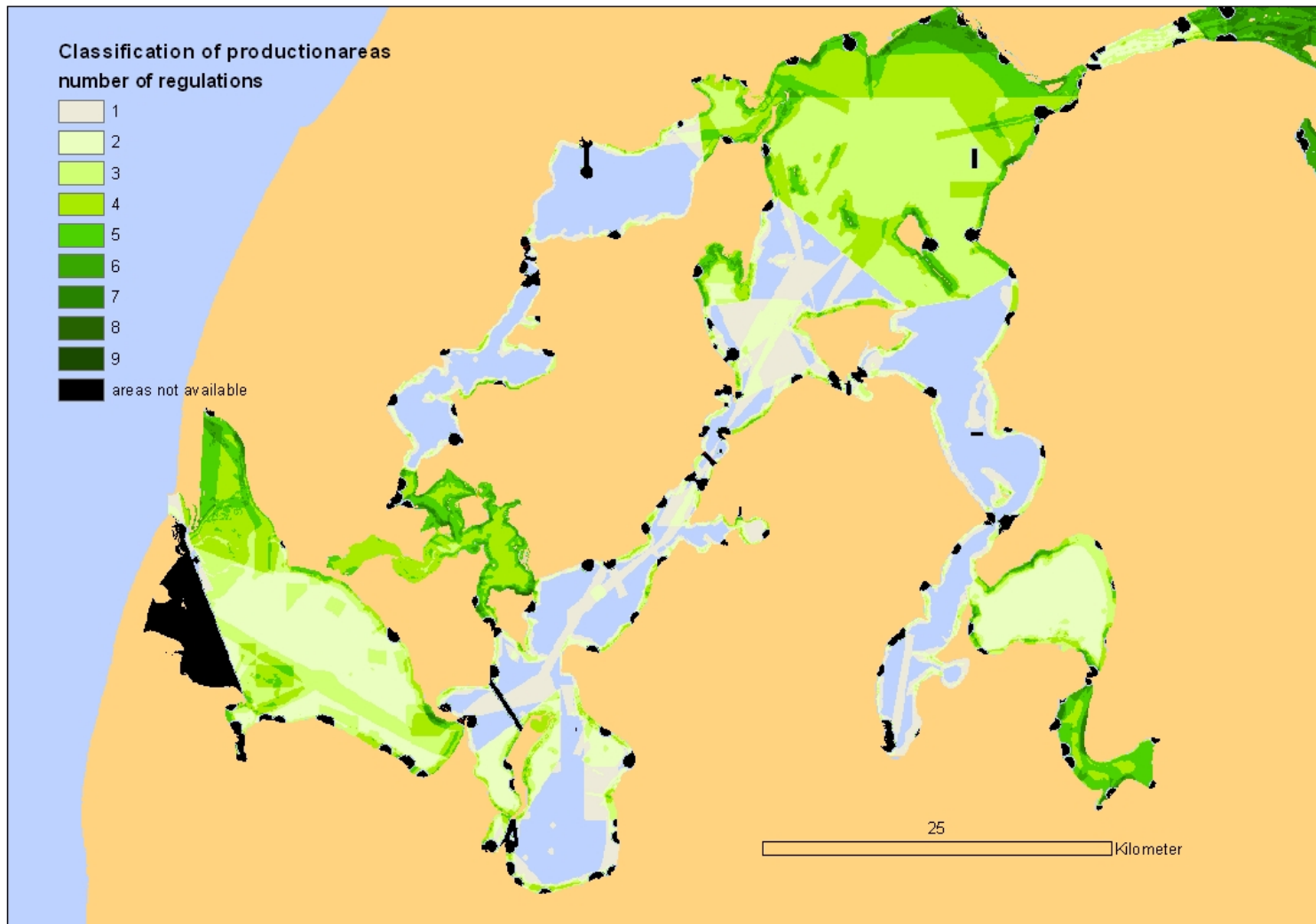


Nordic Workshop on Marine Spatial Planning, 6-8 June 2007, Copenhagen, Denmark

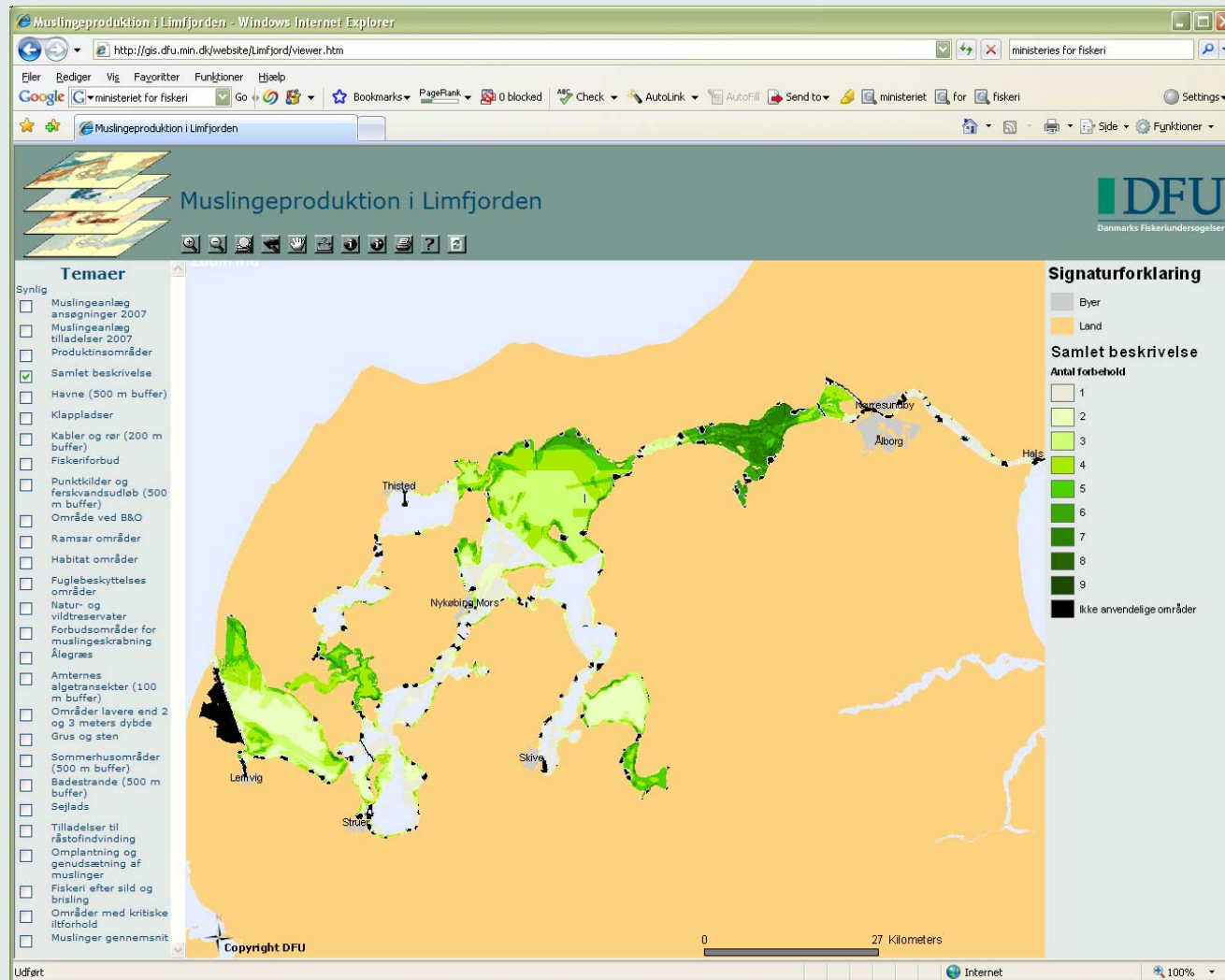
Trawling for herring and sprat > 6 m

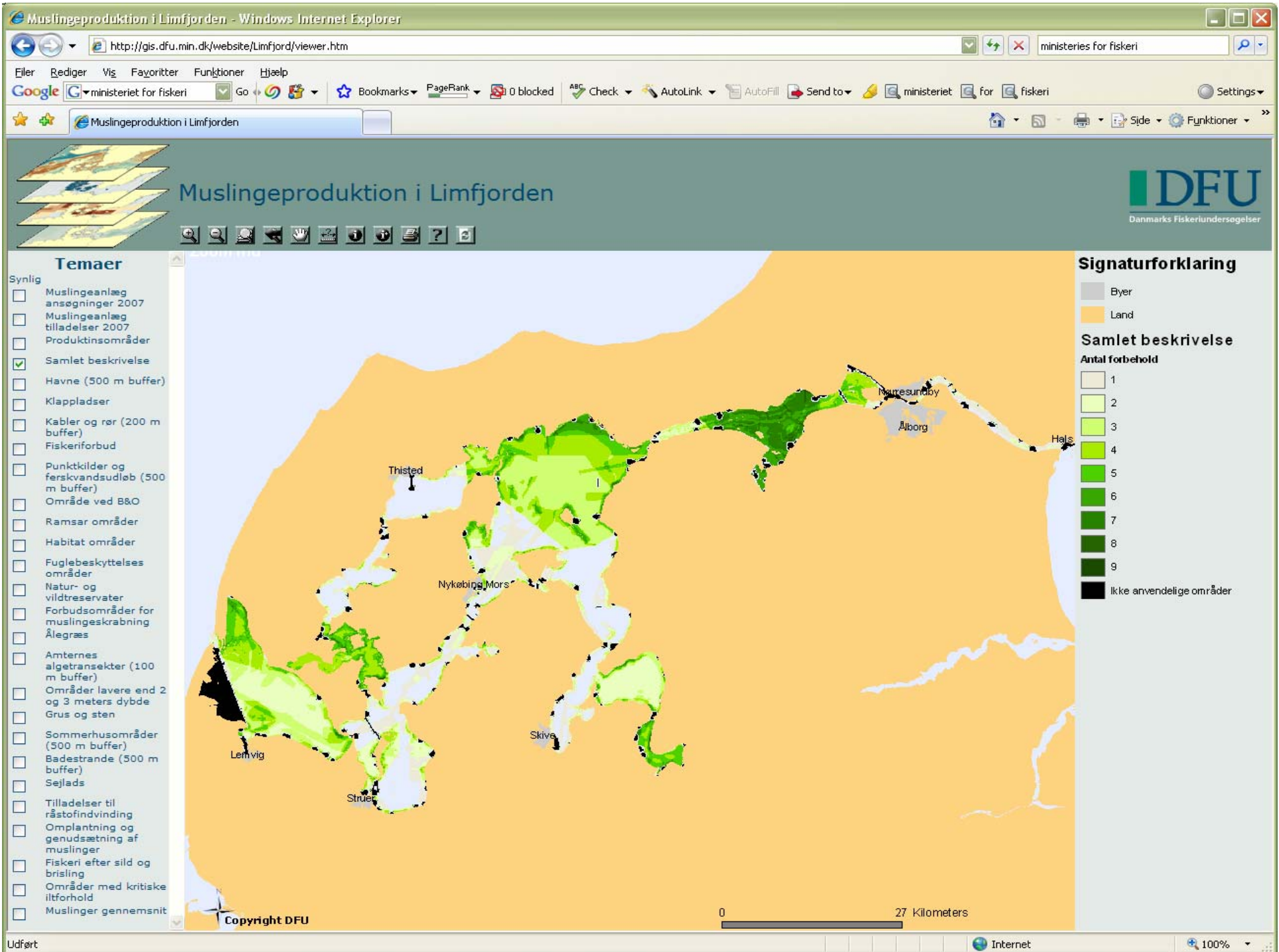


Resulting map



On the Internet





Placering af havbrug i Danmark - Windows Internet Explorer

http://gis.dfu.min.dk/website/Havbrug/viewer.htm

ministeries for fiskeri

Eller Rediger Vis Favoritter Funktioner Hjælp

Google G

Go

Bookmarks PageRank Popups okay Check AutoLink AutoFill Send to

Settings

Muslingeproduktion i Limfjorden Placering af havbrug i Da...

Side Funktioner

Placering af havbrug i Danmark

DFU
Danmarks Fiskeriforsøgelses

Temaer

Synlig

- Saltholdighed < 5 eller > 35
- Saltholdighed > 20 og std > 2
- Strømhastighed > 3 knob
- Bølger > 6 m
- Dybder < 6 meter
- Temperatur > 22 grader
- Temperatur < 0 grader
- Tidevand > 15% af vanddybde
- Spildevandsudløb (1 sm buffer)
- Havbrug (1 sm buffer)
- Klappladser 2002 (1 sm buffer)
- Fuglebeskyttelses områder
- Habitat områder
- Ramsar områder
- Natur- og vildtreservater
- Statslige fredninger
- Areal fredninger (aktuelle og forslag)
- Biologisk interessante områder
- Femernbælt reservation
- Råstof ressourceområder
- Råstof ressourceområder for Trafikministeriet
- Militære områder
- Fareområder
- Skydeområder
- Råstofindvindings områder
- Fredningsbælter
- Beskyttede fjorde
- Skærpet målsætning
- Kabler og rør
- Olieplatforme
- Sejlruiter
- Samlede forbehold

Signaturforklaring

- Byer
- Land (Danmark)
- Land (andet end Danmark)

Samlede forbehold

Antal forbehold

- 0
- 1
- 2
- 3
- 4
- 5
- 6
- >6
- Begrænsninger
- Dansk Eksklusiv Økonomisk Zone

Copyright DFU

0 168 Kilometers

Internet 100%



Se the viewers online

- <http://gis.dfu.min.dk/website/Havbrug/viewer.htm>
- <http://gis.dfu.min.dk/website/Limfjord/viewer.htm>

- www.difres.dk
- www.dfu.min.dk
- www.dfu.dtu.dk



Thank you for your attention!

Contacts:

Kerstin Geitner, GIS coordinator (kjg@difres.dk),
Per Dolmer, senior scientist (pdo@difres.dk),
Danish Institute for Fisheries Research